



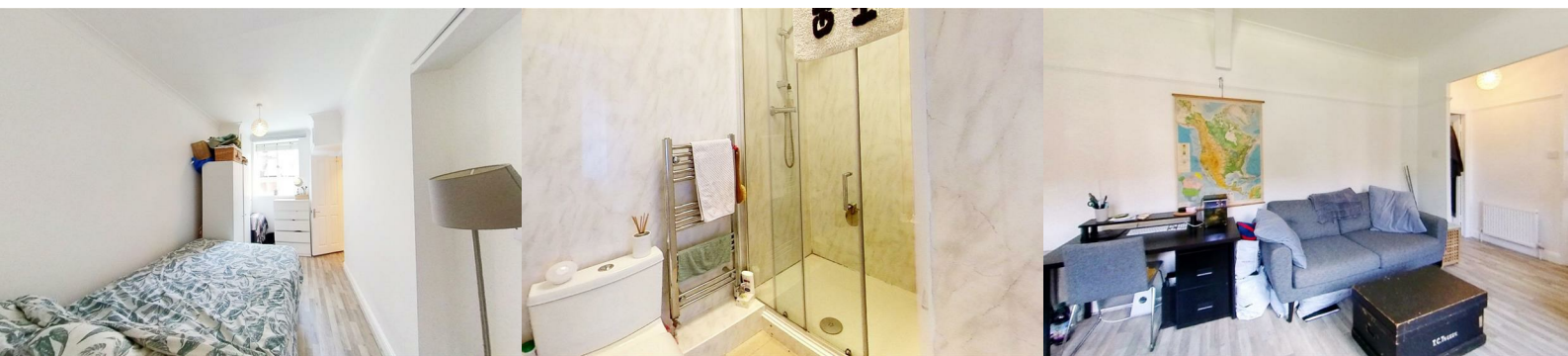
## Haslemere Road

London, N8 9RA

**£1,800 Per month**



Bright and well-presented one-bedroom apartment in Crouch End, featuring high ceilings and a spacious open-plan living area. Ideal for comfortable living in a sought-after location.



This well-presented one-bedroom apartment is set within a purpose-built development in the sought-after area of Crouch End.

The property offers high ceilings and excellent natural light, with a spacious open-plan reception and fitted kitchen—ideal for both everyday living and entertaining. The double bedroom provides good storage, while the modern tiled shower room completes the home.

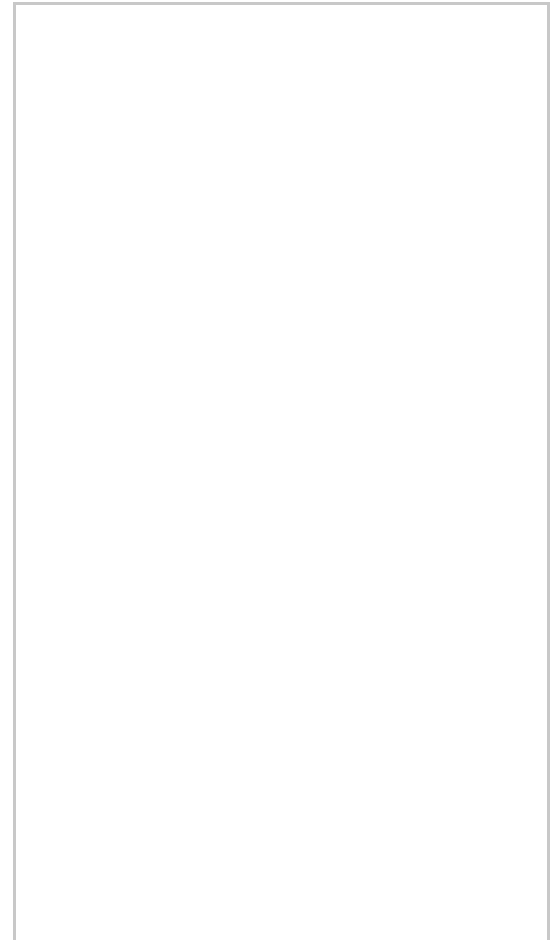
Viewings are highly recommended—contact our team today to arrange an appointment.

For broadband and mobile coverage, please visit the Ofcom website.

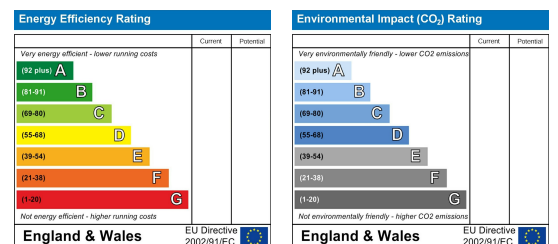
## Area Map



## Floor Plans



## Energy Efficiency Graph



These particulars, whilst believed to be accurate are set out as a general outline only for guidance and do not constitute any part of an offer or contract. Intending purchasers should not rely on them as statements of representation of fact, but must satisfy themselves by inspection or otherwise as to their accuracy. No person in this firm's employment has the authority to make or give any representation or warranty in respect of the property.